



INDOFINE Chemical Company, Inc.

121 Stryker Lane, Bldg. 30, Suite 1 • Hillsborough, NJ 08844 • U.S.A.

Phone: (908) 359-6778 • FAX: (908) 359-1179

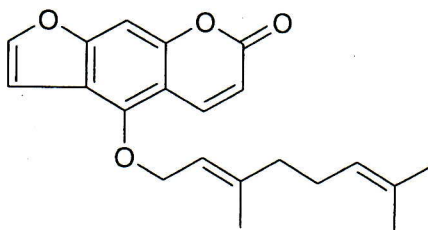
website: www.indofinechemical.com

e-mail: chemical@indofinechemical.com

CERTIFICATE OF ANALYSIS

CAT. No.: 19-335

<u>Product Name:</u>	BERGAMOTTIN
<u>CAS No.:</u>	[7380-40-7]
<u>Lot Number:</u>	1206222
<u>Chemical Formula:</u>	C ₂₁ H ₂₂ O ₄
<u>Molecular Weight:</u>	338.4
<u>Melting Point:</u>	48.5-51°C
<u>Appearance:</u>	Yellowish powder
<u>Solubility:</u>	Soluble in Chloroform
<u>TLC:</u>	Hexane:Ethyl acetate (7:3)
<u>Storage:</u>	+2-8°C
<u>Moisture(KF):</u>	0.40%
<u>Purity (HPLC):</u>	99.06%





INDOFINE Chemical Company, Inc.

121 Stryker Lane, Bldg. 30, Suite 1 • Hillsborough, NJ 08844 • U.S.A.

Phone: (908) 359-6778 • FAX: (908) 359-1179

website: www.indofinechemical.com

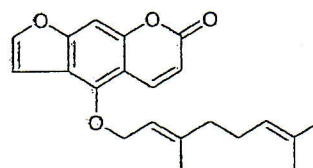
e-mail: chemical@indofinechemical.com

HPLC ANALYSIS

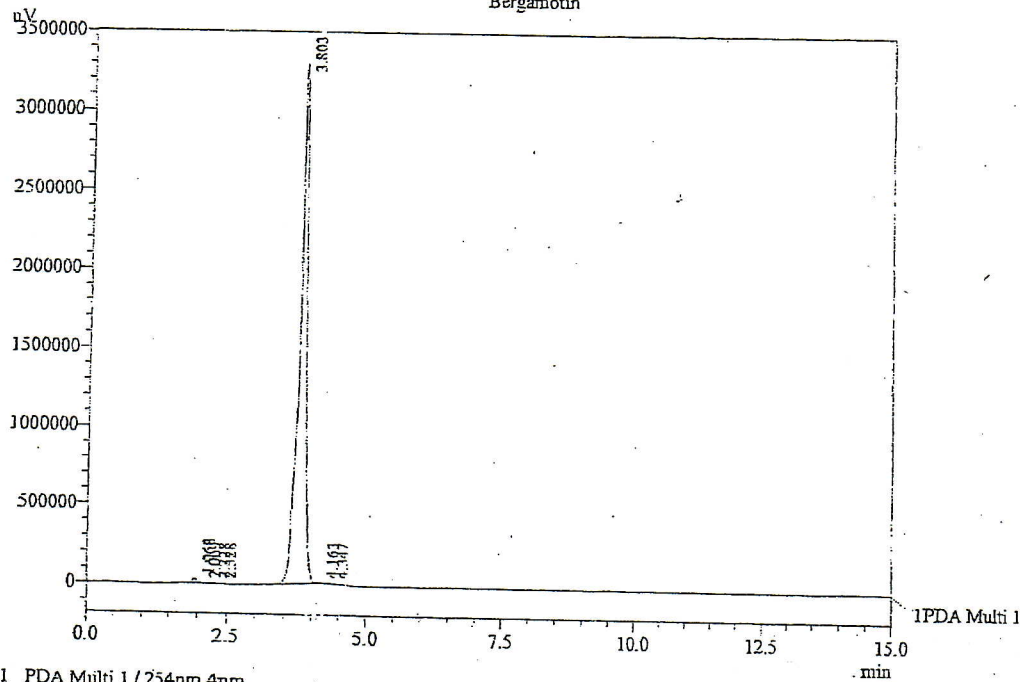
Acquired by : Sanjeev
 Sample Name : Bergamotin
 Sample ID : 95 gms Lot
 Injection Volume : 20 uL
 Data Filename : 110612E.lcd
 Method Filename : Linear Isocratic.M.lcm

Date Acquired : 6/11/2012 10:55:01 AM
 Data Processed : 6/11/2012 12:16:49 PM
 Column : Inertsil ODS-3V₂ (150mm x4.6mm 5.0μ)
 Flow : 1.200 mL/min.
 Mobile Phase : A.(10% water) B(90% of Acetonitrile)

Catalog No.: 19-335
 Product name: Bergamottin
 Lot No.: 1206222



Chromatogram
Bergamotin



PDA Ch1 254nm 4nm

PeakTable

Peak#	Name	Ret. Time	Area	Area %	Relative Retention Time
1	RT:1.968	1.968	145764	0.48	0.52
2	RT:2.080	2.069	11465	0.04	0.54
3	RT:2.228	2.228	9952	0.03	0.59
4	RT:2.328	2.328	20174	0.07	0.61
5	Bergamotin	3.803	29808248	99.06	1.00
6	RT:4.163	4.163	30730	0.10	1.09
7	RT:4.347	4.347	65260	0.22	1.14
Total			30091593	100.00	



INDOFINE Chemical Company, Inc.

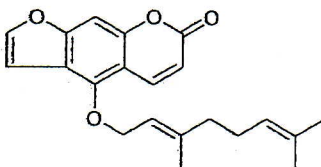
121 Stryker Lane, Bldg. 30, Suite 1 • Hillsborough, NJ 08844 • U.S.A.

Phone: (908) 359-6778 • FAX: (908) 359-1179

website: www.indofinechemical.com

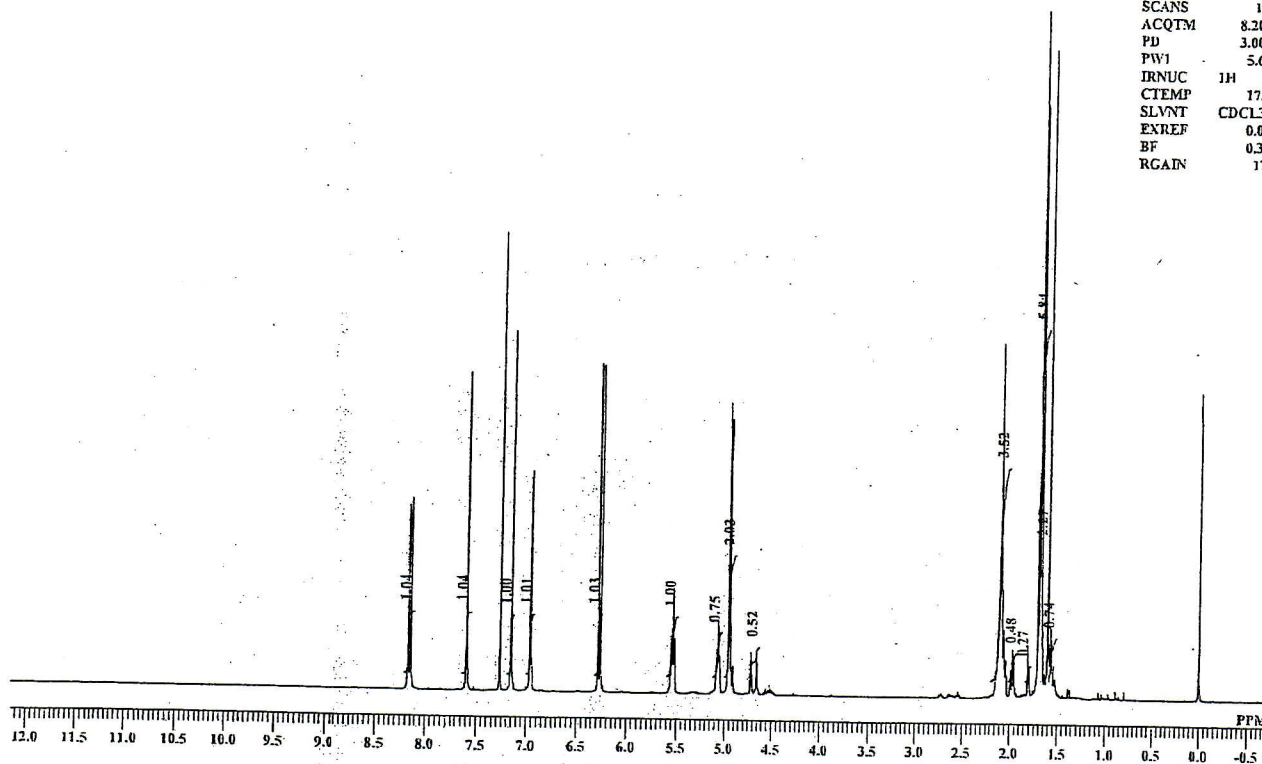
e-mail: chemical@indofinechemical.com

Catalog No.: 19-335
Product name: Bergamottin
Lot No.: 1206222



BMT-95 1H NMR CDCl3

DFILE BMT-95.als
COMNT BMT-95 1H NMR CDCl3
DATIM Tue Jun 05 15:50:42 2012
OBNUC 1H
EXMOD NON
OBFRQ 399.65 MHz
OBSET 124.00 KHz
OBFIN 10500.00 Hz
POINT 65536
FREQU 7992.01 Hz
SCANS 16
ACQTM 8.2002 sec
PD 3.0000 sec
PW1 5.60 usec
IRNUC 1H
CTEMP 17.1 c
SLVNT CDCl3
EXREF 0.00 ppm
BF 0.30 Hz
RGAIN 17





INDOFINE Chemical Company, Inc.

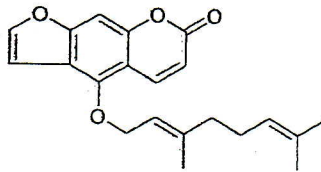
121 Stryker Lane, Bldg. 30, Suite 1 • Hillsborough, NJ 08844 • U.S.A.

Phone: (908) 359-6778 • FAX: (908) 359-1179

website: www.indofinechemical.com

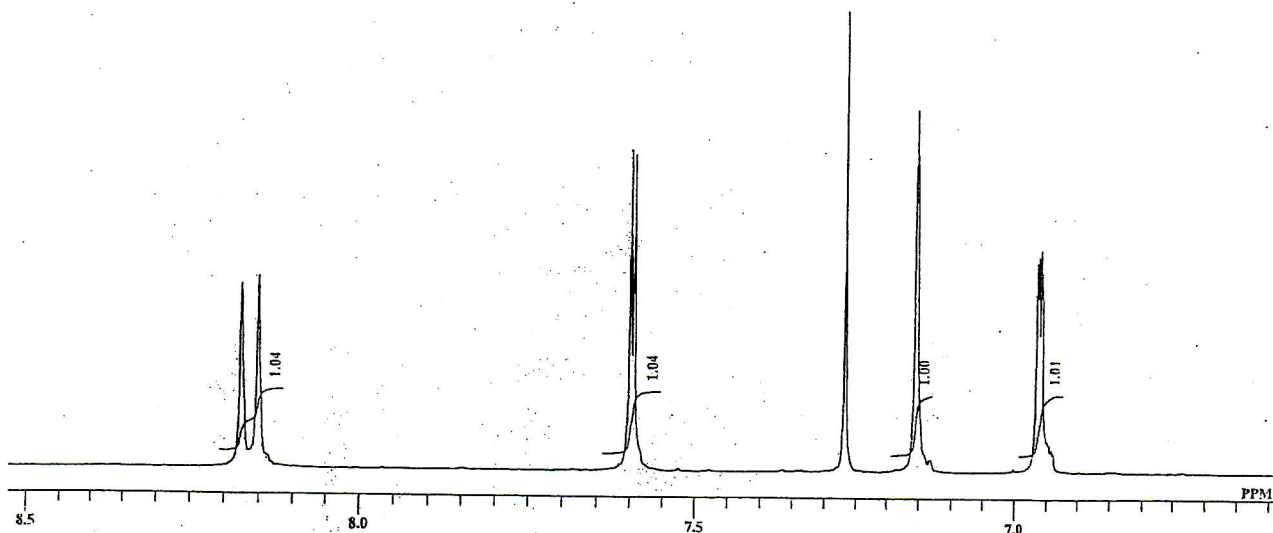
e-mail: chemical@indofinechemical.com

Catalog No.: 19-335
Product name: Bergamottin
Lot No.: 1206222



BMT-95 1H NMR CDCl3

DFILE	BMT-95.als
COMNT	BMT-95 1H NMR CDCl3
DATIM	Tue Jun 05 15:50:42 2012
OBNUC	1H
EXMOD	NON
OBFRQ	399.65 MHz
OBSET	124.00 KHz
OBFIN	10500.00 Hz
POINT	65536
FREQU	7992.01 Hz
SCANS	16
ACQTM	8.2002 sec
FD	3.0000 sec
PW1	5.60 nsec
IRNUC	1H
CTEMP	17.1 c
SLVNT	CDCl3
EXREF	0.00 ppm
DF	0.30 Hz
RGAIN	17





INDOFINE Chemical Company, Inc.

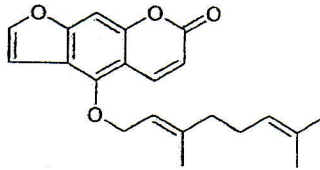
121 Stryker Lane, Bldg. 30, Suite 1 • Hillsborough, NJ 08844 • U.S.A.

Phone: (908) 359-6778 • FAX: (908) 359-1179

website: www.indofinechemical.com

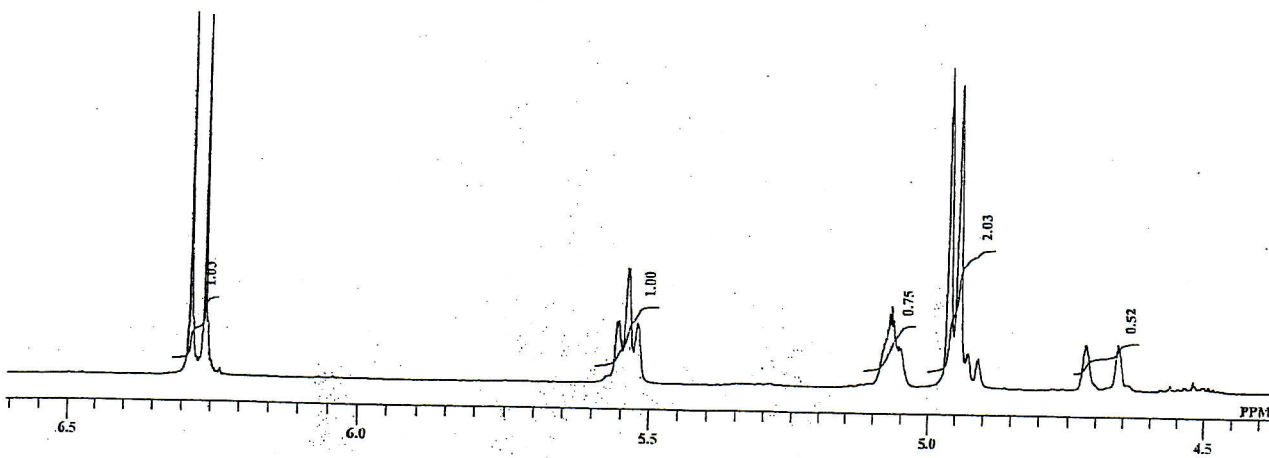
e-mail: chemical@indofinechemical.com

Catalog No.: 19-335
Product name: Bergamottin
Lot No.: 1206222



BMT-95 1H NMR CDCl3

DFILE	BMT-95.nls
COMNT	BMT-95 1H NMR CDCl3
DATIM	Tue Jun 05 15:50:42 2012
OBNUC	1H
EXMOD	NON
OBFRQ	399.65 MHz
OBSET	124.00 KHz
OBFIN	10500.00 Hz
POINT	65536
FREQU	7992.01 Hz
SCANS	16
ACQTM	8.2002 sec
PD	3.0000 sec
PW1	5.60 usec
IRNUC	1H
CTEMP	17.1 c
SLVNT	CDCl3
EXREF	0.00 ppm
BF	0.30 Hz
RGAIN	17





INDOFINE Chemical Company, Inc.

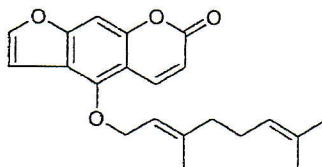
121 Stryker Lane, Bldg. 30, Suite 1 • Hillsborough, NJ 08844 • U.S.A.

Phone: (908) 359-6778 • FAX: (908) 359-1179

website: www.indofinechemical.com

e-mail: chemical@indofinechemical.com

Catalog No.: 19-335
Product name: Bergamottin
Lot No.: 1206222



BMT-95 1H NMR CDCl3

DFILE	BMT-95.als
COMNT	BMT-95 1H NMR CDCl3
DATIM	Tue Jun 05 15:50:42 2012
OBNUC	1H
EXMOD	NON
OBFRQ	399.65 MHz
OBSET	124.00 KHz
OBFIN	10500.00 Hz
POINT	65536
FREQU	7992.01 Hz
SCANS	16
ACQTM	8.2002 sec
PD	3.0000 sec
PW1	5.60 usec
IRNUC	111
CTEMP	17.1 c
SLVNT	CDCl3
EXREF	0.00 ppm
BF	0.30 Hz
RGAIN	17

